





Introducing M-FLASH

The most effective tool to increase the power of your engine, through the OBDII port, enabling you to program the new map in a few minutes.

M-FLASH can be connected to your PC and, with the software included, allows you to download the most suitable maps for your car. With M-FLASH you can alternate the use of the original maps with the modified ones, without any special technical knowledge.

M-FLASH can also be used to find and erase errors in the memory of your ECU.

Diagnostics port location

M-FLASH communicates with your vehicle through the diagnostics port.

AUDI

Underneath the steering wheel, above the pedals.

Reading time 20 minutes approx.

Programming time 10 minutes approx.

FORD

Underneath the steering wheel, above the pedals.

Reading time 5 minutes approx.

Programming time 5 minutes approx.

RENAULT

Under the front ashtray in the central console on the vehicle.

Reading time 10 minutes approx.

Programming time 5 minutes approx.

SEAT

Underneath the steering wheel, above the pedals.

Reading time 20 minutes approx.

Programming time 10 minutes approx.

SKODA

Underneath the steering wheel, above the pedals.

Reading time 20 minutes approx.

Programming time 10 minutes approx.

VW

Underneath the steering wheel, above the pedals.

Reading time 20 minutes approx.

Programming time 10 minutes approx.

Warning

- ✓ Do not remove the OBDII connector of your M-FLASH from the diagnostics connector during any operation.
- ✓ Turn off all electrical and electronic devices installed on your car before you connect the M-FLASH to the diagnostics port.
- ✓ Turn off the engine, take out of gear and put on the handbrake.
- ✓ During reading and writing the cooling fans may start and the instrument panel may indicate system failures.

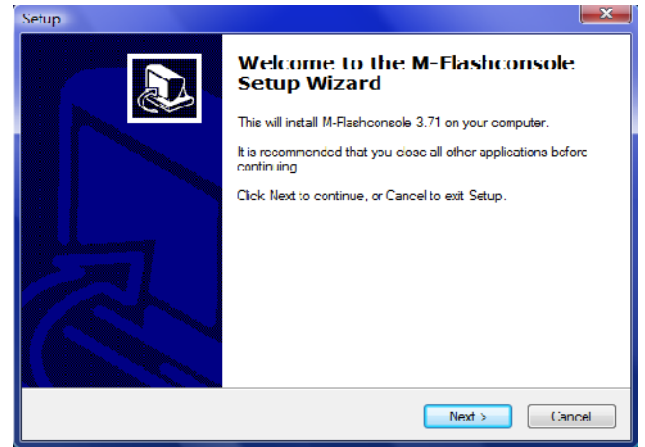
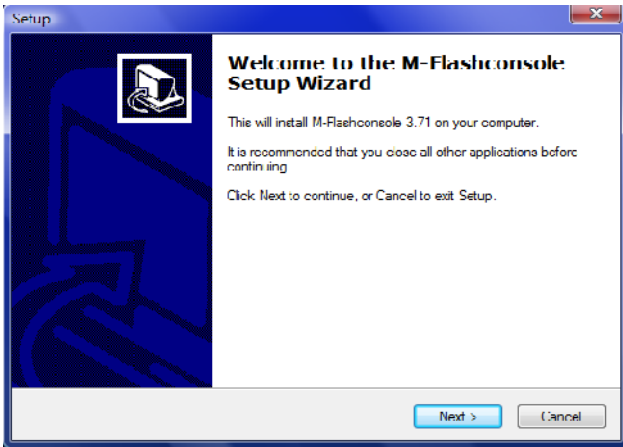
www.more-bhp.com

info@more-bhp.com



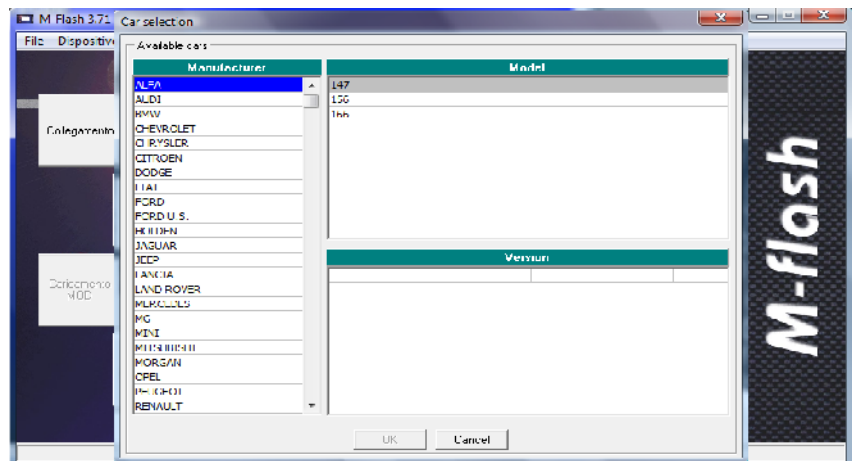
M-FLASH Installation

1. Connect your PC to the internet webpage: <http://www.more-bhp.com/downloads.html>
2. Click on the **Download M-Flash Console 3.71** button and save the file on your PC.
3. Run the installation file as soon as downloaded, you will be guided during the installation process.
4. Connect M-FLASH to the PC through the supplied USB cable, at first connection will be necessary to install the driver for USB device.



How to use M-FLASH

1. Run the M-Flash Console 3.71 software.
2. Connect M-FLASH unit to the PC through the supplied USB cable.
3. Click on the **Link** button to start the communication between the PC and your M-FLASH.
4. Choose your specific-car from the list and wait for the installation of the correct firmware.
5. Select the language that will be shown on the display of your M-Flash and wait for the installation of the language.
6. Remove M-Flash unit from USB connector.



www.more-bhp.com

info@more-bhp.com



7. Locate the diagnostics port on your vehicle.

8. Connect the M-FLASH'S OBDII cable to the diagnostics port. M-FLASH is now active.

9. Follow the onscreen instructions of M-FLASH that will help you during the reading of the original file.

10. Remove the OBDII cable of your M-FLASH from the diagnostics port.

11. Connect M-FLASH unit to PC through the supplied USB cable.

12. Run the M-Flash Console 3.71 software.



13. Click on the **Link** button to start the communication between the PC and your M-FLASH unit.

14. Select the original file and download it to your PC, by clicking the **Read** button.

15. Now complete the remap file request form at www.more-bhp.com/fileservice.html

16. Select the position in which programming the modified file.

17. Enter a name to assign to the modified file.

18. Click on the **Write** button and wait until the operation ends.

19. Remove M-FLASH unit from USB connector.

20. Connect the OBDII cable of your M-FLASH to the diagnostics port.

21. Choose the writing operation on the display of M-FLASH unit, which will guide you to write the modified file.

22. Select the modified file to be programmed.

23. Follow the onscreen instructions of the M-FLASH that will help you during the writing of the modified file.

24. Remove the OBDII cable of your M-FLASH from the diagnostics port.

www.more-bhp.com

info@more-bhp.com



Restore your vehicle's original setting

1. Connect the OBDII cable of your M-FLASH to the diagnostics port.
2. Choose the writing operation on the display of the M-FLASH unit.
3. Select the original file to program, read the first time M-FLASH was connected to your vehicle.
4. Follow the onscreen instructions of M-FLASH that will guide you to restore the original file.
5. Remove the OBDII cable of your M-FLASH from the diagnostics port.

If you wish to use M-FLASH on a new car, included in the list, follow the instructions below:

1. Connect M-FLASH to the PC through the supplied USB cable.
2. Run the M-Flash Console 3.71 software.
3. Click on the **Link** button to start the communication between the PC and your M-FLASH unit.
4. Click on the **Erase** button, your M-FLASH will be totally erased.
5. Repeat the operations described in *How to use M-FLASH*, starting from the 4th point.



Statement of Compliance

More-BHP Ltd,
Unit R, Sheriff House,
Nantwich Road,
Middlewich,
Cheshire.
CW10 0LH

As producer certify that the product:

Product: M-FLASH

Complies with the following Directive: EMC 89/336/EEC – Marcatura CD 93/68/CE and to the following Regulations:

EMC: EN 55022 : 1998 + A1 : 2000 + A2 : 2003
EN 55024 : 1998 + A1 : 2001 + A2 : 2003